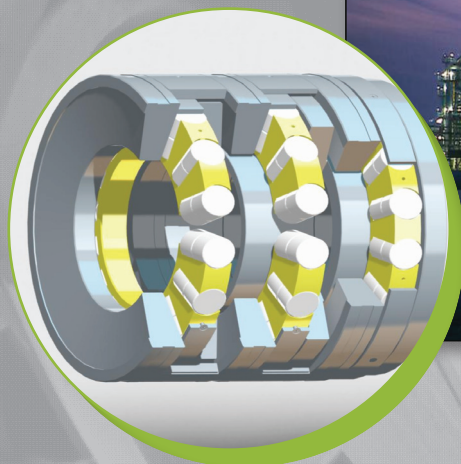


URB GROUP

Petroleum Industry Bearings Special and standard bearings



Special requirements:

- **High load carrying capacity in an extremely confined space**
- **High reliability**
- **In some cases: corrosion resistance**

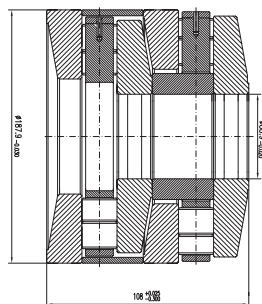
Tandem Thrust Bearings

Our company offer specifically designed bearings for high thrust loads and have ready to meet the requirements for quality and performance. The material used GCr15SiMn, Grade 1. It has good hardenability and strength, good temperature resistance and stability.

The tandem design allows the use of a high thrust capacity bearing

Tandem Thrust 2 Stage

TAB-035075M bearing



Prefix: TAB, TAC - mm sizes where "B" is 2 stage, "C" is 3 stage;

Size Designator: 035075, 120240;

Variation Code: 207

Type cage: M - machined brass cage, roller centred

Dimension(mm)			Rows	Rated load(KN)		Weight (kg)	URB bearing code
d	D	H		Ca	Coa		
88.9	187.9	108	2	3106	821	2.5574	TAB-035075M
304.8	609.6	539.75	3	13500		810.082	TAC-120240-207M

The following **recommendation** should be adhered to: Preload: 1% of the dynamic basic load rating. Mounting tolerances: shaft m6 housing H7. Lubrication: must always be lubricated by oil circulation.

in a small area. It was originally designed for a rotary swivel used on an oil drilling rig.

The advantages of a tandem bearing:

- low radial space requirement
- high axial load carrying capacity
- long operating life

Tandem Thrust 3 Stage

TAC-120240-207M bearing

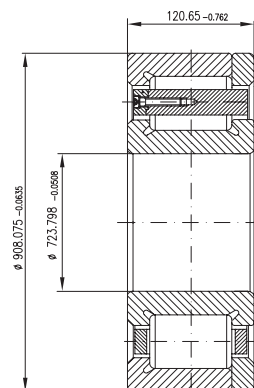


2 types of variation codes:

- Standard variations
- Special MTO variation from standard use sequential numbers starting from 201

Large size Cylindrical roller Bearings (NPEW/724M)

Dimension(mm)			Rows	Rated load(KN)		Weight (kg)	URB bearing code
d	D	H		Ca	Coa		
723.798	908.075	120.65	1	2985	7366	195.8	NPEW/724M



Others Rolling Bearings (large sizes)

Cylindrical roller bearings

NU2252 EM
NU2264 M
NU1076 M
NUP1080 M
NUP29/560 M
NUP29/600 EMA
NUP29/630 EMA
NUP29/710 EMA

Spherical roller bearings

22356 CAW33
23156CA/C3W33
23160CAW33
23176 CAW33
23260 MBW33
24060CAW33
24176 CAW33
230/600 CAW33

Angular contact thrust ball bearings

RY 65/500
RY 65/530
RY 65/600
RY 65/600 A
RY 65/800 B

URB GROUP

320 Republicii Street, 731108 Barlad, ROMANIA
phone: +40 235 / 411120, 412120 fax: +40 235 / 413838, 308200
sales@urb.ro; www.urb.ro